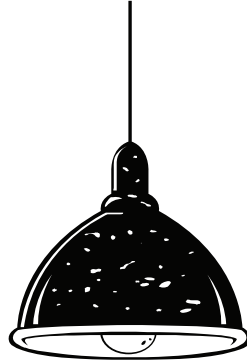


**Instructions Enclosed
Cord Pendant**



S T E E L

L I G H T I N G C O .

310.569.7056

Covernut
w/ Orange Gasket



Socket



Lighting Shade



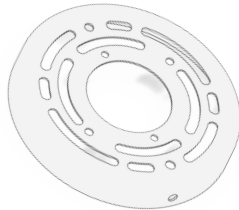
*Light Bulb



Ceiling Canopy



Universal
Rotating Canopy



Small Screws



Large Screws



Wire Nuts



*Items are not included standard but may be ordered.

Warning Risk of Fire.
Must Be Installed By a Licensed
Electrician.
Make Sure All Power Is Off
Prior to Installation.
Suitable for Wet Locations.
Use With Type A Lamp.

Advertencia Riesgo de incendio. Debe ser
instalado por un electricista con licencia.
Asegúrese de que toda la alimentación
esté apagada antes de la instalación.
Adecuado para ubicaciones húmedas.
Uso con lámpara de tipo A.

Avertissement Risque d'incendie. Doit
être installé par un électricien sous
licence.
Veillez à ce que toute alimentation soit
désactivée avant l'installation.
Convient aux emplacements humides.
Utilisation avec la lampe de type A.



Steel Lighting Co Assembly and Installation

STEP 1: Ensure the Orange Gasket is firmly set into the wedge on the bottom of the Covernut. Thread the cord from the Socket through the inside of the Lighting shade, so that the Socket is in the neck of the fixture and the cord is coming out of the top. Slide the Covernut over the cord and REVERSE THREAD the Covernut onto the top of the Socket. The Socket should be secure in the lighting Shade and the cord should be coming out the top.

STEP 2: Determine the desired length of the cord on the socket & cut accordingly. Allow 2"-3" of extra cord for wiring connection. Standard length cord is 4 feet long. Strip 1/2" of cord which will expose the (3) Wire leads (Black, White and Green). Strip the (3) wire leads exposing the copper wire for wiring connections.

STEP 3: Insert the nipple through the center hole of the canopy and secure it with the included washer and nut on the inside of the Ceiling Canopy

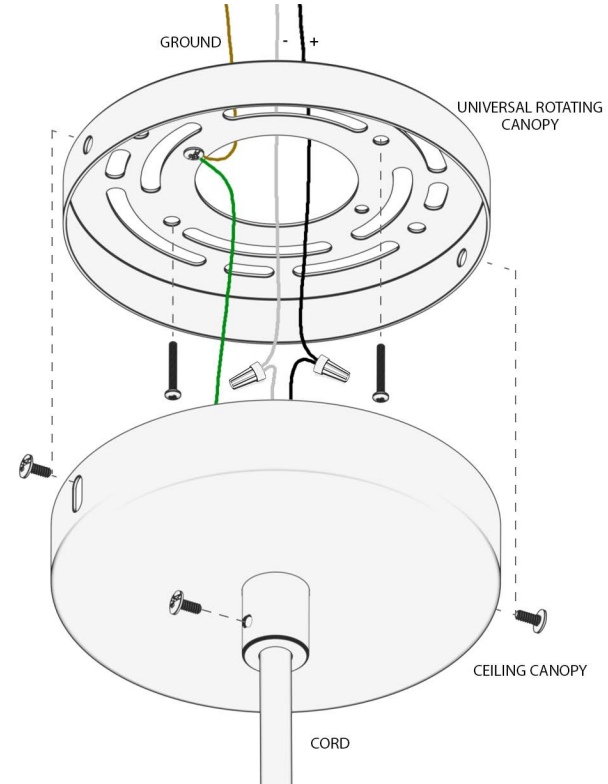
STEP 4: Slide the cord through the center hole and nipple of the Ceiling Canopy with the wire leads going through first.

STEP 5: Mount the Universal Rotating Canopy mount to your junction box with the 2 Silver Screws provided.

STEP 6: Hardwire the (3) wire leads to the power source with the (3) Orange Wire Nuts provided.

STEP 7: Mount the Ceiling Canopy right on top of Universal Rotating Canopy with the two small black screws provided on the side of the Ceiling Canopy

STEP 8: Tighten the small Set Screw that is located on the side of the center hole to secure the cord in place.



Hello!

Thank you so much for your **Steel Lighting Co.** purchase! We have been proudly creating these fixtures for over 20 years in Los Angeles, California. As a family owned and operated business, we take a huge amount of pride in our work and we hope that you see that in the products that you have received.

If for any reason you are unhappy with your order, or you have questions about ordering more, we are just a phone call away! Just mention this note and receive 5% off all your future orders.

Thank you from sunny California!

Rachel and Aaron Abergel

310.569.7056
SteelLightingCo.com

